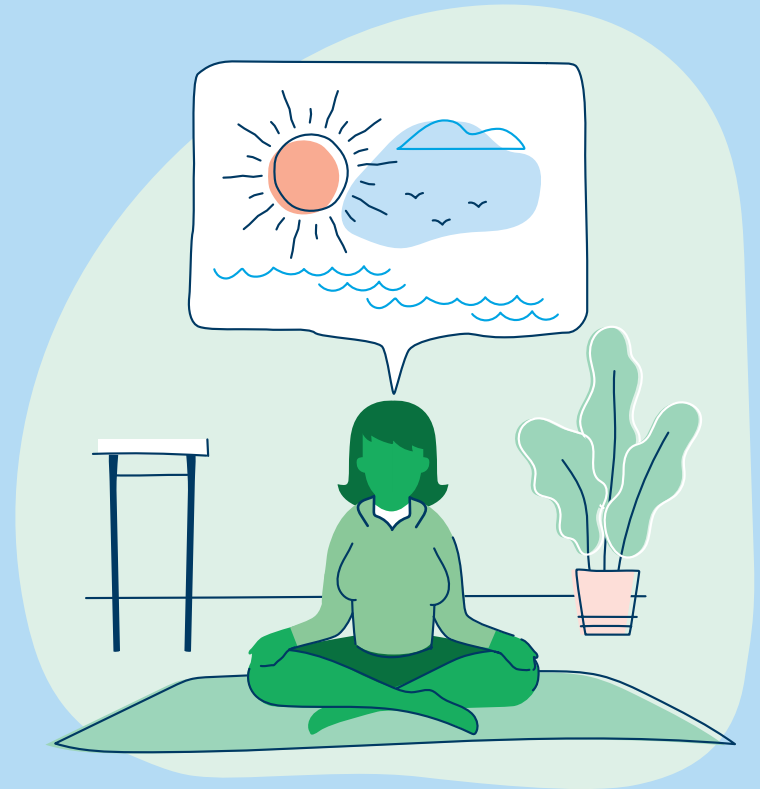


SAVE THE DATE

School Behavioral Health and Wellness Conference

Thursday, May 28, 2020
8:00 a.m. to 3:30 p.m.

Thomas Jefferson High School
830 Old Clairton Rd,
Jefferson Hills, PA 15025



Organized by

The CHILL Project
Psychiatry and Behavioral
Health Institute
Allegheny Health Network
Pittsburgh, Pennsylvania

Conference Partners

AHN Center for Traumatic Stress, Highmark Caring Place,
and West Jefferson Hills School District

ONLINE REGISTRATION can be accessed at cme.ahn.org
For questions/additional information, please email rachel.phillips@ahn.org.



Conference Overview

Through engaging and thought-provoking seminars, the School Behavioral Health and Wellness Conference will focus on topics related to increasing and understanding behavioral health concerns and wellness within the school context. Sessions will include, creating a trauma-informed school environment, engaging and enhancing the mindful awareness of a school community, how grief and loss have an impact upon student behavior and outcomes, teacher burnout, and recognizing anxiety and depression in students.

At the conclusion of this course, participants should be able to:

- Recognize behaviors associated with anxiety and depression
- Create trauma-informed school and classroom environments
- Serve students who are experiencing grief and loss within the school context
- Understand the impact of professional burnout within the school environment
- Increase mindful awareness of students and teachers

Intended Audience

School educators, social workers (LSW, LCSW), Counselors (LPC), school administrators, psychologists (PhD, PsyD), Physicians (MD), Nurses

Accreditation

School Educators
Approved for Act 48 Hours

CE for Psychologists

Allegheny Health Network is approved by the American Psychological Association to offer continuing education for psychologists. Allegheny Health Network maintains responsibility for the program and its content.

CE for Social Workers

The American Psychological Association (APA) is a preapproved provider of continuing education courses and programs for social workers and clinical social workers and can be used toward re-licensure. Social workers may claim credits for attending educational courses and programs delivered by preapproved providers, such as the American Psychological Association (refer to CE for Psychologists above). For verification, please refer to Continuing Education Regulations § 47.36 #6 (ix) found at www.dos.state.pa.us/social. Certificates of attendance will be awarded following the conference provided a completed evaluation form is submitted.

Physicians

Allegheny General Hospital is accredited by the Accreditation Council for Continuing Medical Education to provide continuing medical education for physicians.

Allegheny General Hospital designates this live activity for a maximum of 4.75 AMA PRA Category 1 Credits™.

Other Credit

American Nurses Credentialing Center (ANCC) accepts AMA PRA Category 1 Credits™ from organizations accredited by the ACCME. American Academy of Nurse Practitioner (AANP) accepts AMA PRA Category 1 Credits™ from organizations accredited by the ACCME. American Academy of Physician Assistants (AAPA) accepts AMA PRA Category 1 Credits™ from organizations accredited by the ACCME.



Continuing Medical Education
Allegheny Health Network
120 Fifth Avenue
FAPHM-134F
Pittsburgh, Pennsylvania 15222